









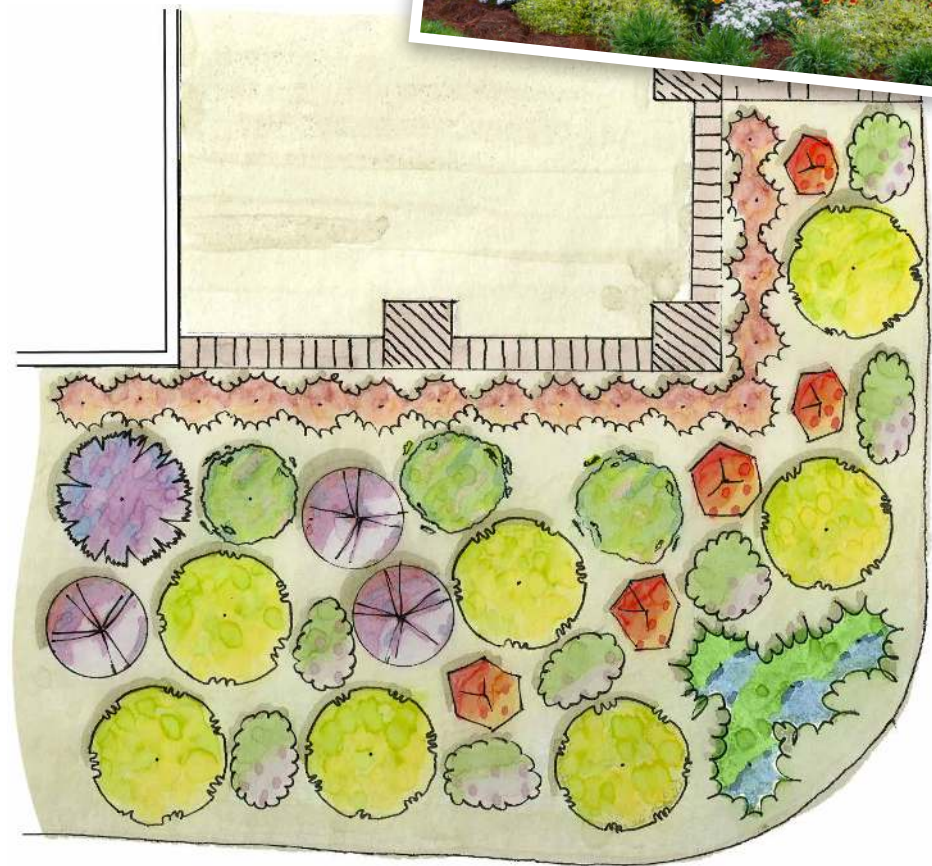
Forget the Rules

Garden how you want to; chic cottage gardens are full of color and texture and light on fuss. Include a brilliant shrub with year-round interest in the mix; **Miss Lemon *Abelia*** offers bright variegated leaves and masses of pale pink blooms summer through fall.



PLANT LIST

-  Miss Lemon™ *Abelia* **SL**
-  'Sunset Flash' *Gaillardia* **SL**
-  Delta Jazz® *Crapemyrtle* **SL**
-  'Orange Rocket' *Barberry* **SL**
-  Little Bonnie™ *Dwarf Spiraea* **SL**
-  Purple Daydream® *Dwarf Loropetalum* **SL**
-  White Blush Endurascape™ *Verbena* **SL**
-  Sassy Grass™ *Sisyrinchium* **SL**



Find more garden plans at southernlivingplants.com